



# Hungarian University of Agriculture and Life Sciences





➤ **Graduate's Testimonial:**

**Tawani Naude (from South-Africa)- SH scholar:**

**[https://www.youtube.com/watch?v=Vdg-MuKg\\_EA&t=2s](https://www.youtube.com/watch?v=Vdg-MuKg_EA&t=2s)**



**About MATE: <https://youtu.be/RduGnNN20eE>**

# WHY MATE?

- **MATE brochure:** <https://en.uni-mate.hu/brochure-for-prospective-students>
- **International environment: 1.816 international students from over 100 countries (~14%)**
- **Colourful student life:**
  - Orientation week programmes - <https://youtu.be/kNZH6ZyPNDY>
  - International dinner - <https://www.youtube.com/watch?v=7yeB6zKuL14> , <https://www.youtube.com/watch?v=N5kvmtHJkqg>
  - Culture days - <https://youtu.be/8GCNNT3jl08>
  - SZIA Agroecological Garden
  - Campus tours
  - Talking clubs: Kolping Colours, 'English Corner'
  - MyHungary video contest



# WHY MATE? - 2



- **Accommodation in dormitory** – 1st year scholars: priority (application by beginning of August), self-financed students: in Gyöngyös Campus



- **Student services** – mentoring systems, administrative issues, insurance, student counselling or mental health and career



- **Safe and green environment in all campuses:**



# Campuses



**GEORGIKON CAMPUS**



**SZENT ISTVÁN CAMPUS**



**KÁROLY RÓBERT CAMPUS**



**KAPOSVÁRI CAMPUS**



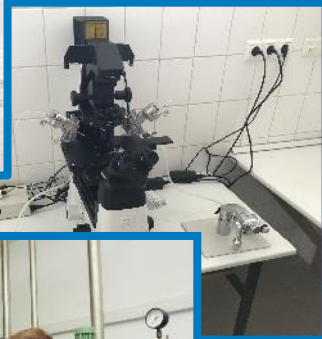
**BUDAI CAMPUS**



- **No. of institutes: 20**
- **No. of students: 13.466** (including students in the correspondence and distance-learning trainings)
- **No. of international students: 1.816** (from 103 countries!) International student ratio: 13,4%
- **Number of PhD schools: 11**
- **Number of PhD students: 726** (including PhD candidates)
  - Of this: international PhD students 353 (48,6%)
- **Number of academic staff: 1046**
  - professors + associate professors, assistant professors, research fellows etc.)
- **Number of staff: 1412**
- **Languages of the courses: Hungarian, English**

## Bachelor Programmes (~7 semesters):

- Agricultural Engineering
- Environmental Engineering
- Horticultural Engineering
- Wildlife Management Engineering
- Business Administration and Management
- Mechanical Engineering
- Tourism and Catering (8 semesters)
- Food Engineering
- Landscape Management and Garden Construction Engineering
- Film and Media (6 semesters)



Curricula to check here: <https://ed.uni-mate.hu/academic-year-202425>

## Master's Programmes (4 semesters):

- Mechanical Engineering
- Engineering Management
- **Biosystems Engineering (3 semesters! - NEW)**
- Environmental Engineering
- **Ecotoxicology (NEW)**
- Agricultural Water Management Engineering
- Crop Production Engineering
- Agricultural Biotechnology (Plant and Animal)
- Wildlife Management Engineering
- Rural Development Engineering
- Management and Leadership
- Supply Chain Management
- Tourism Management
- Business Development
- Horticultural Engineering
- Food Science and Technology Engineering
- Food Safety and Quality Engineering
- Landscape Architecture and Garden Design
- **Viticulture and Oenology Engineering (NEW)**
- Plant Protection
- Business Development
- Animal Nutrition and Feed Safety
- Photography





## **Gödöllő Campus:**

Doctoral School of Animal Biotechnology and Animal Science

Doctoral School of Biological Sciences

Doctoral School of Environmental Sciences

Doctoral School of Plant Sciences

Doctoral School of Economic and Regional Sciences

Doctoral School of Mechanical Engineering

## **Buda Campus:**

Doctoral School of Landscape Architecture and Landscape Ecology

Doctoral School of Food Sciences

Doctoral School of Horticultural Sciences

## **Kaposvár Campus:**

Doctoral School of Animal Science

Doctoral School of Economic and Regional Sciences

## **Georgikon Campus:**

Festetics Doctoral School



- **The Hungarian Government's most prestigious higher education scholarship programme (official website: <https://stipendiumhungaricum.hu/> )**
  - launched in 2013, supervised by the Ministry of Foreign Affairs and Trade and managed by Tempus Public Foundation
  - currently over [90 sending countries](#) are involved
  - MATE offers 50 English programmes (BSc/MSc/PhD) + a [Hungarian Language Preparatory Course](#)
  
- **Provisions covered by the scholarship:**
  - **Tuition-free education**
  - **Monthly stipend** – BSc, MSc and one-tier master's level: monthly amount of HUF 43,700 (cca EUR 110), PhD: HUF 140,000 (cca EUR 365) for the first 4 semesters & HUF 180,000 (cca EUR 470) for the last 4 semesters contribution to the living expenses in Hungary
  - **Accommodation contribution** – free dormitory place or a contribution of HUF 40,000/month to accommodation costs (in bigger cities this contribution does not cover the full amount of rental costs)
  - **Medical insurance** – health care services according to the relevant Hungarian legislation (Act LXXX of 1997, national health insurance card) and supplementary medical insurance for up to HUF 65,000 (cca 170 EUR) a year/person
  
- **Deadline: 15 January 2025, 2 pm (CET, Budapest time)**

Application timeline (further info: <https://stipendiumhungaricum.hu/>)

**15 January 2025,  
2 pm (CET)**

Submitting application:  
to TPF and to  
Sending Partner

**28 February  
2025**

First selection point:  
technical check and  
nomination process

**Until 15 March  
2025**

Statement of the  
Supervisor (if required  
by the proposed  
Doctoral School)

**Middle of March  
– end of May  
2025**

Second selection  
point: institutional  
admission procedure

**Until 15 March  
2025**

Submitting  
recommendation  
letter (for self-financed  
students only)

**Until 15 April  
2025**

Submitting medical  
certificate

**End of June –  
middle of July  
2025**

Notification about  
selection results

**July–August  
2025**

Visa application  
process

**Until 30  
September 2025**

Arrival in Hungary

## ➤ Useful documents and videos:

- **CALL for Applications for bachelor's, master's, one-tier master's, non-degree programmes and postgraduate specialist training courses 2025/26**
- **CALL for Applications for doctoral programmes 2025/26**
- **APPLY HERE:** <https://apply.stipendiumhungaricum.hu/>
- Checklist of the required application documents
- Application Guide (PDF)
- Application VIDEO Guide

**Application deadline: 15th January 2025, 2 p.m. (CET)**

## ➤ Required documents (BSc/MSc/PhD):

- Online application form (! personal data ! – SPELLING!)
- **Motivation letter** (1 or 2?) - *Why are you a suitable candidate?, letter format*
- **Secondary school certificate / Bachelor degree / Master degree (MD)**
- Transcript of records (! in case of ongoing studies)
- **Proof of English language proficiency (B2 level) - (MD)**
- **Passport (MD)**
- **PhD:** research proposal, 2 recommendation letters, *Statement of the Supervisor* (by 15 March - 3 PhD schools!)
- **Portfolio:** *Landscape Architecture and Garden Design*  
*Film and Media, Photography:* Applicants can attach material in any format as part of their portfolio, be it a short film, a photo series, video, PDF summary or anything that adds value and represents the level of the artist. The point is to gain insight into his/her art.
- Medical certificate (only for nominated applicants) - by 15 April

**MD= missing documents (deadline: 1 August, BUT better before the entrance exam)**

## ➤ Selection process:

- **STEP 1** – nomination (criteria differ from one country to another): complete application package is the best (middle of Jan – end of Feb)
- **STEP 2** – entrance exam (middle of March – end of May)
- **STEP 3** – **final decision (end of June)** by the Board of Trustees of Tempus Public Foundation (importance of priorities: 1st choice study programme matters!)
- **Factors considered:** your ranking position on the list of nominees + result of entrance exam (0-100 scale) + quotas (country/study programme)

## ➤ Entrance exam/interview (info and invitation via email):

- **BSc level:** based on the assessment of the uploaded documents (if necessary, oral interview)
- **MSc level:** credit recognition procedure (60 relevant credits) + oral interview (**motivation**, language skills)
- **PhD level:** oral interview (motivation, language skills + **research topic, scientific background**, publications, presentations at conferences etc.)

**Platform:** Teams / Zoom / DreamApply recorded interview

## Doctoral studies:

- At MATE, 3 doctoral schools consider the ***Statement of the Supervisor*** document **compulsory to be uploaded by 15 March:**

- Festetics Doctoral School
- Doctoral School of Food Sciences
- Doctoral School of Landscape Architecture and Landscape Ecology

*In the lack of this document, your application will be formally rejected, no entrance exam either.*

- For research topics and potential supervisors, please check this webpage: <https://doktori.hu/index.php?menuid=115&lang=EN> (official website of all doctoral schools in Hungary)  
Select a topic (check the last few years as well), and contact the professor directly.
- You can also contact the scientific secretary or the international coordinator of the respective doctoral school: <https://en.uni-mate.hu/doctoral-schools>.

<https://en.uni-mate.hu/mate-international-scholarship-program-misp->

## ➤ Who is eligible?

Those who applied for SH or SCYP but are **not nominated** (in the 1st stage of the SH application process) or **not selected** (in the 3rd stage)

## ➤ What are the benefits of MISP?

MISP is to provide the last 90 credits (a little less than half the tuition fee) at BSc level and the last 60 credits (half the tuition fee) at MSc level free of charge for MISP holders. MISP is designed to offer fee waiver at the second half of studies.

<https://en.uni-mate.hu/bsc-and-msc-programmes-in-english-tuition-fees>

**ONE-YEARLY TUITION FEE HAS TO BE PAID IN ADVANCE (3000-4000 EUR for BSc and 6000 EUR for MSc)**

## ➤ Application and assessment process:

- Write an e-mail to [international@uni-mate.hu](mailto:international@uni-mate.hu) with the subject line Application\_MISP\_level\_program name. Applications previously submitted in DA will be promptly confirmed, formally checked and reviewed by the International Relations Centre, then forwarded to the institutions concerned.
- 2 Calls: from **middle of March** and **middle of June 2025**

## ➤ Eligible applicants:

- have Hungarian roots and maintains a Hungarian identity (Motivation Letter, Statement for Application - Annex 2)
- citizens of one of the eligible countries and have an address outside of Hungary
- possess a Recommendation Letter from a Hungarian diaspora organisation or a Hungarian Diplomatic Representation
- have lived outside the territory of Hungary for at least 10 years before the submission of their application
- completed the last 4 years of their secondary education outside Hungary
- were born before 31 August 2007 (there is no upper age limit)

## ➤ Eligible Countries:

all countries and regions of the world EXCEPT

- the member states of the European Union,
- the Republic of Serbia, and
- the Zakarpatska Oblast region of Ukraine.





# Scholarship for Christian Young People (SCYP)

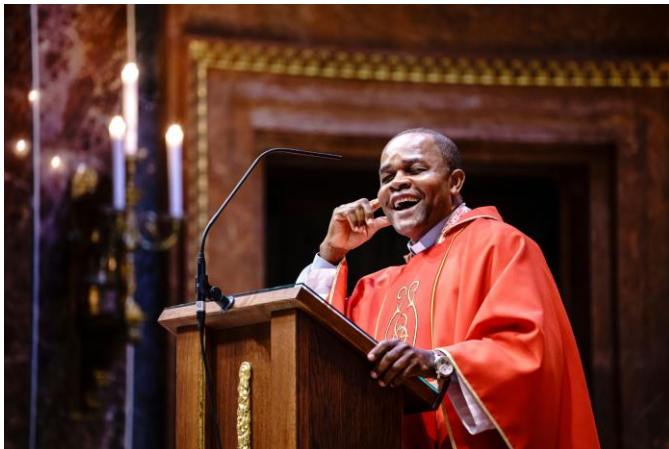
For the 2025/2026 academic year, the scholarship is announced for the citizens of the following countries:

1. Armenia
2. Chad
3. Ethiopia
4. Ghana
5. Iraq
6. Israel
7. Kenya
8. Lebanon
9. Pakistan
10. Palestine
11. Syria
12. Nicaragua
13. Niger
14. Nigeria



## Number of available study programs at MATE (You can pick only one):

- 5 Bachelor Programs
- 11 Master Programs
- 4 Doctoral Schools



## The scholarship covers:

- tuition free education
- monthly stipend (BSc, MSc HUF 166 600 (EUR 410)/ month, doctoral HUF 140 000-180 000 (EUR 340-440))
- accommodation contribution HUF 40 000 (EUR 100)/ month
- travel allowance: HUF 200.000 /academic year (EUR 490)
- health care services and supplementary medical insurance (HUF 65 000 (EUR 160)/ year )



## Call for Application and Annexes

### **Application Timeline:**

- 10 January: deadline for submitting applications
- 15 February: technical check
- 30 April: deadline for submitting medical certificate
- from 15<sup>th</sup> June: decision by Minister responsible for Higher Education
- from 1 July: notification about selection result
- accept offer online 😊
- 31 July: upload missing documents
- July-August: visa application process
- 1 September: arrival in Hungary

**Approved recommendation to upload to your application:**

**Recommendation of the local Christian Church,** following the formal criteria given in the Call for Application



## Application Process

To successfully apply for [study programs](#) at MATE complete the following steps:

- APPLICATION FORM
- Letter of motivation
- Reference forms/recommendation letters from two referees
- BSc applicants: secondary school final examination
- MSc applicants: BSc degree certificate and transcripts.
- Proof of B2 level of English
- Curriculum Vitae
- Medical certificate
- Payment Confirmation of 100 EUR Application Fee/application. Maximum 3 applications per applicant



**Deadline: 31 May 2025**

## Selection Process - After submitting the Application Package

Revision of  
Application  
*until 18 June*

Interview  
*until 25 June*

PLoA  
or LoR  
*until 1 July*

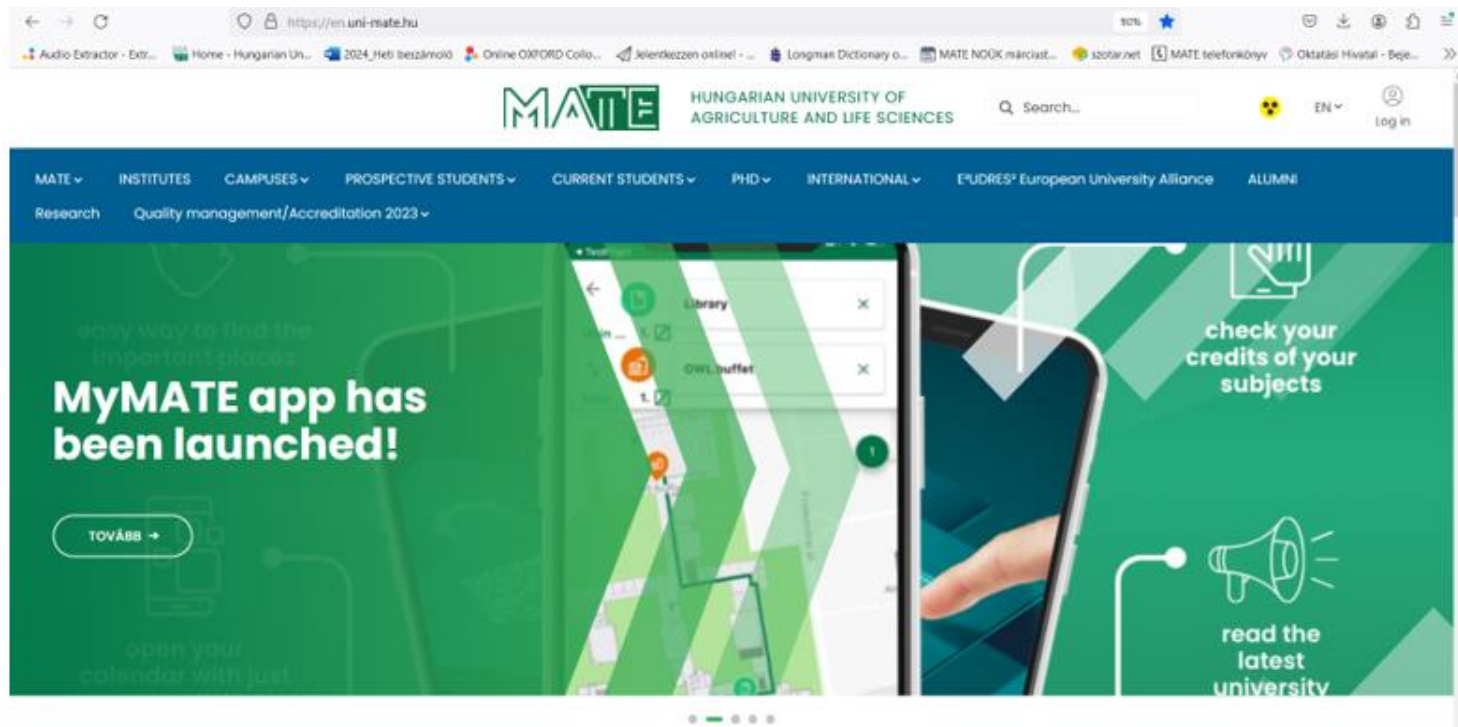
Tuition  
Fee (1 ac. yr!)  
*until 14 July*

LoA  
Welcome Info  
*until 18 July*

Arrival  
*1 September*

**Detailed info: <https://en.uni-mate.hu/en/application-procedure-for-bsc-msc>**

- **MATE website:** <https://en.uni-mate.hu/> (alumni network, career services, mental health, academic calendar)
- **MATE brochure:** <https://en.uni-mate.hu/brochure-for-prospective-students>
- **MyMATE app for MATE students:** <https://en.uni-mate.hu/en/h%C3%ADr/-/content-viewer/mymate-app-has-been-launched-/20123>



- **Language certificate requirements:** **B2 level of English** is required (*i.e. TOEFL min. of 500 on PBT, 61 on iBT; a 6.0 on IELTS, EUROEXAM or equivalent accredited language exams, including completion of previous level of studies in English e.g. GCSE or BSc*) - Please, note that **we do not accept DUOLINGO (DET) or EF SET test** as a proof of English proficiency

**List of accepted language certificates:**

<https://en.uni-mate.hu/application-procedure-for-bsc-msc>

- **Family unification:** neither SH nor MATE is involved in the procedure.  
**Financial background, health insurance and accommodation** are the responsibility of the family. No accommodation can be provided in the dorm for children.
- **Living in Hungary / costs – 600-800 EUR/month, dormitory:120 EUR/month, cost of renting a flat in Budapest: from 250 EUR/month**

➤ **Working as a student:** max. 30 hours/week is allowed

➤ **Residency after graduation**

Webpage of the Immigration Office: <http://oif.gov.hu/index.php?lang=en>

Options:

1) Residence permit **for job seeking and entrepreneurship**

>> registration as a job seeker is necessary

2) Residence permit **for employment** (work permit)

>> work agreement

**Apostille procedure:** <https://konzinfo.mfa.gov.hu/en/legalisation-procedure-documents-be-used-abroad>

# Keep in touch!

Check our [website](https://en.uni-mate.hu/) and [FB page](https://www.facebook.com/sziuinternational) regularly:

<https://en.uni-mate.hu/>

<https://www.facebook.com/sziuinternational>

**Contact us:**

**SH – [sh@uni-mate.hu](mailto:sh@uni-mate.hu)**

**SCYP – [scyp@uni-mate.hu](mailto:scyp@uni-mate.hu)**

**Diaspora - [diaspora@uni-mate.hu](mailto:diaspora@uni-mate.hu)**

**Self-financed – [admission@uni-mate.hu](mailto:admission@uni-mate.hu)**



# Thank you for your kind attention!



**MATE**

MAGYAR AGRÁR- ÉS  
ÉLETTUDOMÁNYI EGYETEM

[www.en.uni-mate.hu](http://www.en.uni-mate.hu)